



North
Tyneside
Council

Family Friendly Committee Best Start in Life

Lesley Davies & Joann Connolly

13th March 2024

What we'll cover

01 Best Start in Life offer

02 Universal Offer

03 Targeted Offer

04 Digital Offer

05 Partnership approach to deliver the offer

06 Footfall to the Family Hub Model

07 0 – 19 Q3 Performance data

08 Strategic Partnership Commitment

Best Start in Life

A **system-wide model** of providing high-quality, whole-family, joined up, family support services. Family Hubs deliver these non-stigmatising family support services **from pregnancy, through the child's early years and later childhood, and into early adulthood** until they reach the age of 19 (or up to 25 for young people with special educational needs and disabilities) **with a great Start for Life offer at their core.**

The offer itself is not a single building – instead, it is a **network** of different **physical locations** in the community, as well as **outreach** and **online** services and support.

The Partnership

Universal Start for Life services:

1. Communities, families and their network
2. NHS Partners
3. 0 – 19 Children's Public Health Service
4. Early Help and Prevention
5. Early Years Inclusion team
6. Voluntary Sector

This offer is part of the Family Hub Model

The building blocks for lifelong emotional and physical health are laid down in the period from conception to the age of two. What happens to an infant in the 1,001 critical days is all about prevention

Universal Offer..



Family Hubs

Maternity offer

Family Hub and community activities

Digital offer



Forest School

Healthy Start vitamins

ChatHealth

Family Healthy weight and nutrition

ParentLine

Solihull online



VCS

Infant feeding peer support

Healthy Child Programme



Targeted Offer...

Baby Box

Supported Housing Offer

Ready For School & Ready For Learning Offer

Parenting Offer

Sleep Offer



Healthy Start Scheme

Specialist Infant Feeding support

Forest School



Public Health Specialist Health Visitor roles

Chatterbox

Family Health Wellbeing Partners



Two Matters

Digital Offer

- Solihull online
- Reducing parental conflict workshops
- Dadpad
- Kooth
- ChatHealth
- ParentLine
- Local Offer
- NHS/ NTC Website and Social Media platforms

Our most popular online courses are

Understanding
your baby

Understanding your child
with additional needs

Understanding your
child from toddler to
teenage

Understanding your
teenager's brain

With over 1800 people having signed up to the courses!



Footfall to the Family Hub Model



- To date 2186 visitors have accessed the activities we run from the hubs
- This doesn't include groups ran by partner activities.




- Over 3500 visitors have accessed the Forest school provision including:
 - Emotional wellbeing groups
 - Elected Home educated children and Young people
 - SEND provision



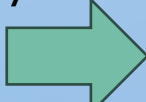
- Registered 779 babies in our hubs this year.
- Stopping them from having to go out of borough

0 – 19 Q3 Performance Data

New Born Visits (face to face achieved) in North Tyneside was 89.2%

- This remains consistent with the same period in the previous year (89.8%). 

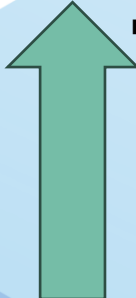
6–8 week Visits (face to face achieved) in North Tyneside was 94.6%

- Consistent in the same period in the previous year (94.3%). 

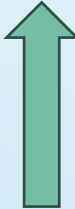
15 Month Contacts (face to face achieved) in North Tyneside

92.8%

- This is an increase of over 2% from the same period in the previous year (90.5%).

- This is largely due to the figures for the South West area improving by 8%. 

2 ½ Year Contacts (face to face achieved) in North Tyneside was 86.8%

- The % This is an increase of over 5.5% from the same period in the previous year (81.2%). 
 - Each locality area has seen an improvement of between 2.4%, in the South West, to 8.5% in the Coast.

154 conversations opened with the 0–5 ParentLine service, similar to Q3 2022/23.

- This involved 501 messages received, and 977 sent.



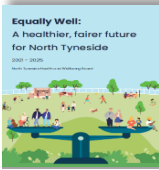
Our North Tyneside Plan



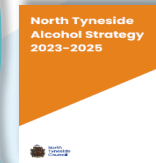
NTC / NHS Joint Forward Plan



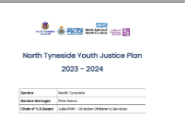
Children and Young People's Mental Health and Emotional Wellbeing Strategy



Equally Well



North Tyneside Alcohol Strategy



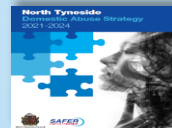
North Tyneside Youth Justice Plan



Special Educational Needs and Disabilities Inclusion Strategy



North Tyneside Children and Young People's Plan



North Tyneside Domestic Abuse Strategy



North Tyneside Autism Strategy

System Wide Strategic Governance